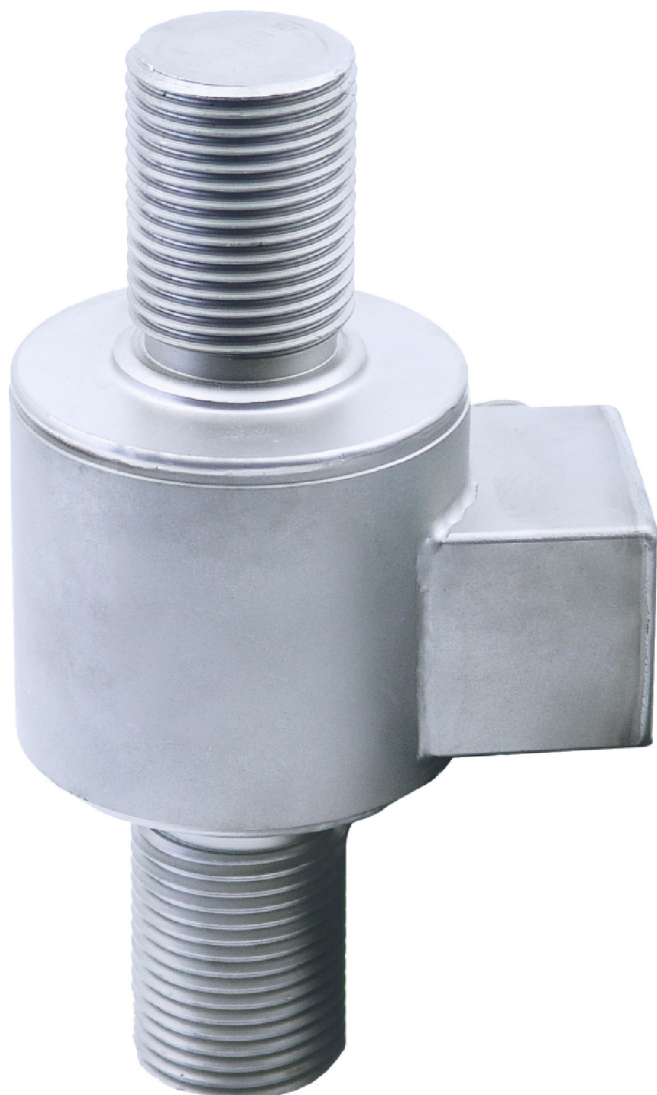


KERN CD10-2P2

Load cells made of stainless steel



Factory calibration certificate (Tensile): 961-166V

Factory calibration certificate (Tensile/Pressure): 961-366V

Category

Brand: Sauter

Packaging & shipping

Delivery: 864 h

Dimensions packaging (WxDxH): 220 x 220 x 160 mm

Gross weight: 2,700 kg

Net weight: 2,200 kg

Shipping method: Parcel service

Construction

Cable length: 20 m

Piktogramme

STANDARD



Measuring system

Combined Error: 0,030 %

Load cell connection: 4-wire

Nominal sensitivity: 1,500

OIML class: C2

Resolution Load cell à Verifiable: 2000 e

Weighing capacity [Max]: 10 t

Y value: 5000

Environmental conditions

Maximum operating temperature: 65 °C

Maximum operating temperature: 40 °C

Minimum ambient temperature: -35 °C

Minimum operating temperature: -10 °C

Services (optional)

Factory calibration certificate (Pressure): 961-266V

KERN CD100-2P2

Load cells made of stainless steel



Packaging & shipping

Delivery:	864 h
Dimensions packaging (WxDxH):	220 x 220 x 160 mm
Gross weight:	2,700 kg
Net weight:	2,200 kg
Shipping method:	Parcel service

Construction

Cable length:	20 m
---------------	------

Piktogramme

STANDARD



Measuring system

Combined Error:	0,030 %
Load cell connection:	4-wire
Nominal sensitivity:	1,500
OIML class:	C2
Resolution Load cell à Verifiable:	2000 e
Weighing capacity [Max]:	100 t
Y value:	5000

Environmental conditions

Maximum operating temperature:	65 °C
Maximum operating temperature:	40 °C
Minimum ambient temperature:	-35 °C
Minimum operating temperature:	-10 °C

Category

Brand:	Sauter
--------	--------

KERN CD20-2P2

Load cells made of stainless steel



Packaging & shipping

Delivery:	864 h
Dimensions packaging (WxDxH):	220 x 220 x 160 mm
Gross weight:	2,700 kg
Net weight:	2,200 kg
Shipping method:	Parcel service

Construction

Cable length:	20 m
---------------	------

Piktogramme

STANDARD



Measuring system

Combined Error:	0,030 %
Load cell connection:	4-wire
Nominal sensitivity:	1,500
OIML class:	C2
Resolution Load cell à Verifiable:	2000 e
Weighing capacity [Max]:	20 t
Y value:	5000

Environmental conditions

Maximum operating temperature:	65 °C
Maximum operating temperature:	40 °C
Minimum ambient temperature:	-35 °C
Minimum operating temperature:	-10 °C

Category

Brand:	Sauter
--------	--------

KERN CD30-2P2

Load cells made of stainless steel

KERN[®]



Packaging & shipping

Delivery:	864 h
Dimensions packaging (WxDxH):	220 x 220 x 160 mm
Gross weight:	2,700 kg
Net weight:	2,200 kg
Shipping method:	Parcel service

Construction

Cable length:	20 m
---------------	------

Piktogramme

STANDARD



Measuring system

Combined Error:	0,030 %
Load cell connection:	4-wire
Nominal sensitivity:	1,500
OIML class:	C2
Resolution Load cell à Verifiable:	2000 e
Weighing capacity [Max]:	30 t
Y value:	5000

Environmental conditions

Maximum operating temperature:	65 °C
Maximum operating temperature:	40 °C
Minimum ambient temperature:	-35 °C
Minimum operating temperature:	-10 °C

Category

Brand:	Sauter
--------	--------

KERN CD50-2P2

Load cells made of stainless steel



Packaging & shipping

Delivery:	864 h
Dimensions packaging (WxDxH):	220 x 220 x 160 mm
Gross weight:	2,700 kg
Net weight:	2,200 kg
Shipping method:	Parcel service

Construction

Cable length:	20 m
---------------	------

Piktogramme

STANDARD



Measuring system

Combined Error:	0,030 %
Load cell connection:	4-wire
Nominal sensitivity:	1,500
OIML class:	C2
Resolution Load cell à Verifiable:	2000 e
Weighing capacity [Max]:	50 t
Y value:	5000

Environmental conditions

Maximum operating temperature:	65 °C
Maximum operating temperature:	40 °C
Minimum ambient temperature:	-35 °C
Minimum operating temperature:	-10 °C

Category

Brand:	Sauter
--------	--------