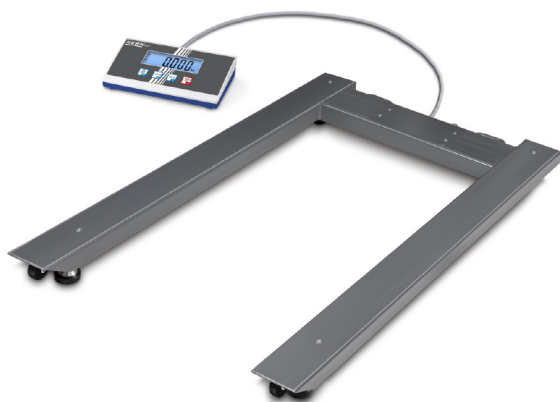


# KERN UIB 1.5T-4

Pallet scale with steel load support (IP67) und the best price-to-performance ratio



## Measuring system

Adjustment options:	External calibration
Eccentric loading at 1/3 [Max]:	2,500 kg
Linearity:	1,500 kg
Load cell connection:	4-wire
Readability [d]:	500 g
Recommended adjusting weight:	1500 kg (M2)
Repeatability:	500 g
Resolution:	3000
Stabilisation time under laboratory conditions:	4 s
Tare range:	-1,500 t
Warm up time:	10 min
Weighing capacity [Max]:	1,500 t
Weighing system:	Strain gauge
Weighing units:	kg lb

## Display

Display digit height (large):	2,500 cm
-------------------------------	----------

## Functions

Data hold function:	yes
---------------------	-----

## Environmental conditions

Maximum humidity:	95 %
Maximum operating temperature:	40 °C
Minimum ambient temperature:	-10 °C
Minimum humidity:	10 %

## Power supply

Battery:	4x1.5 V AA
Input voltage:	100 V - 240V AC 50/60Hz 0.3A
Mains adapter:	Mains adapter external
Mains adapter/adaptor included:	AUS EURO US CH UK
Operating time:	60 h

## Services (optional)

Adjustment at the location of installation: 961-250

DAkkS Certificate:	963-130
--------------------	---------

## Category

Brand:	KERN
Category:	Balances
Product Group:	Pallet scale

## Packaging & shipping

Delivery:	48 h
Dimensions packaging (WxDxH):	1270 x 900 x 260 mm
Gross weight:	87 kg
Net weight:	51 kg
Shipping method:	Freight forwarder

## Construction

Cable length:	5 m
Cable length of display device:	5 m
Dimensions of display device (WxDxH):	235 x 114 x 51 mm
Dimensions of weighing plate (WxDxH):	1195 x 840 x 110 mm
Level indicator:	yes
Revolving screw feet:	yes
Wall mount:	yes
Weighing surface (WxD):	1195 x 840 mm

## Piktogramme

### STANDARD

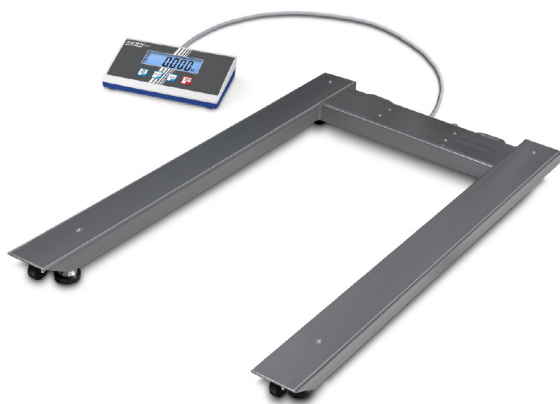


### OPTION



# KERN UIB3T-3

Pallet scale with steel load support (IP67) und the best price-to-performance ratio



## Measuring system

Adjustment options:	External calibration
Eccentric loading at 1/3 [Max]:	5 kg
Linearity:	3 kg
Load cell connection:	4-wire
Readability [d]:	1 kg
Recommended adjusting weight:	1500 kg (M2)
Repeatability:	1 kg
Resolution:	3000
Stabilisation time under laboratory conditions:	4 s
Tare range:	-3 t
Warm up time:	10 min
Weighing capacity [Max]:	3 t
Weighing system:	Strain gauge
Weighing units:	kg lb

## Display

Display digit height (large):	2,500 cm
-------------------------------	----------

## Functions

Data hold function:	yes
---------------------	-----

## Environmental conditions

Maximum humidity:	95 %
Maximum operating temperature:	40 °C
Minimum ambient temperature:	-10 °C
Minimum humidity:	10 %

## Power supply

Battery:	4x1.5 V AA
Input voltage:	100 V - 240V AC 50/60Hz 0.3A
Mains adapter:	Mains adapter external
Mains adapter/adapter included:	AUS EURO US CH UK
Operating time:	60 h

## Services (optional)

Adjustment at the location of installation: 961-252

DAkkS Certificate:	963-132
--------------------	---------

## Category

Brand:	KERN
Category:	Balances
Product Group:	Pallet scale

## Packaging & shipping

Delivery:	48 h
Dimensions packaging (WxDxH):	1270 x 900 x 260 mm
Gross weight:	87 kg
Net weight:	51 kg
Shipping method:	Freight forwarder

## Construction

Cable length:	5 m
Cable length of display device:	5 m
Dimensions of display device (WxDxH):	235 x 114 x 51 mm
Dimensions of weighing plate (WxDxH):	1195 x 840 x 110 mm
Level indicator:	yes
Revolving screw feet:	yes
Wall mount:	yes
Weighing surface (WxD):	1195 x 840 mm

## Piktogramme

### STANDARD



### OPTION



# KERN UIB600K-1

Pallet scale with steel load support (IP67) und the best price-to-performance ratio

# KERN®



## Measuring system

Adjustment options:	External calibration
Eccentric loading at 1/3 [Max]:	1 kg
Linearity:	600 g
Load cell connection:	4-wire
Readability [d]:	200 g
Recommended adjusting weight:	500 kg (M2)
Repeatability:	200 g
Resolution:	3000
Stabilisation time under laboratory conditions:	4 s
Tare range:	-600 kg
Warm up time:	10 min
Weighing capacity [Max]:	600 kg
Weighing system:	Strain gauge
Weighing units:	kg lb

## Display

Display digit height (large):	2,500 cm
-------------------------------	----------

## Functions

Data hold function:	yes
---------------------	-----

## Environmental conditions

Maximum humidity:	95 %
Maximum operating temperature:	40 °C
Minimum ambient temperature:	-10 °C
Minimum humidity:	10 %

## Power supply

Battery:	4x1.5 V AA
Input voltage:	100 V - 240V AC 50/60Hz 0.3A
Mains adapter:	Mains adapter external
Mains adapter/adaptor included:	AUS EURO US CH UK
Operating time:	60 h

## Services (optional)

Adjustment at the location of installation: 961-250

DAkkS Certificate:	963-130
--------------------	---------

## Category

Brand:	KERN
Category:	Balances
Product Group:	Pallet scale

## Packaging & shipping

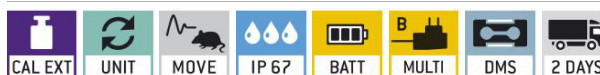
Delivery:	48 h
Dimensions packaging (WxDxH):	1270 x 900 x 260 mm
Gross weight:	87 kg
Net weight:	51 kg
Shipping method:	Freight forwarder

## Construction

Cable length:	5 m
Cable length of display device:	5 m
Dimensions of display device (WxDxH):	235 x 114 x 51 mm
Dimensions of weighing plate (WxDxH):	1195 x 840 x 110 mm
Level indicator:	yes
Revolving screw feet:	yes
Wall mount:	yes
Weighing surface (WxD):	1195 x 840 mm

## Piktogramme

### STANDARD



### OPTION

