

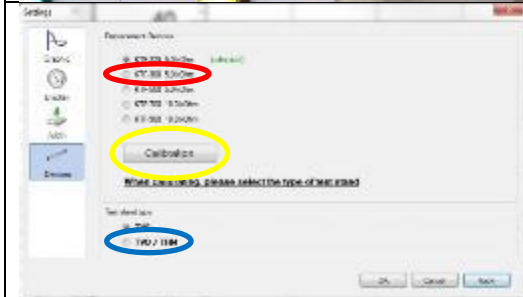


SAUTER GmbH · Postfach 4052 · 72322 Balingen · Germany

Calibration Manual TVO LD



Move the slider to the down until the limit switch stops the movement. Take a caliper and measure the distance between the base plate (red marked) and the ground plate (blue marked) from the FL. If possible zero the caliper.



Open the Software AFH LD and go to the part Settings and go to the part "Devices".

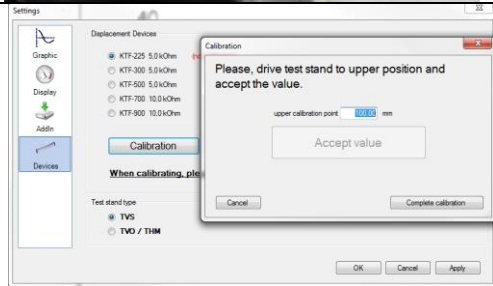
Select the KTF-300 (red marked) and select the TVO (blue marked). Press after the selection the button "Calibration" (yellow marked)

Accept the Part that the LD is at the lowest limit switch.

SAUTER GmbH · Postfach 4052 · 72322 Balingen · Germany



Move the slider up until the distance is > 60mm. Don't care about the exact distance, you can input the caliper reading into the software to fix the calibration



Put in here the caliper value and press accept data.

Go on with the calibration and press the Button "Complete calibration"



Finish the calibration.
 Return to measurement mode .